



WHERE IS PRENTICE'S FARM SOLAR FARM?

Anglo Renewables is preparing to submit a planning application to Maldon District Council for a solar farm on land east of Crows Lane, Woodham Ferrers, Chelmsford, Essex, CM3 8RT.



The solar farm would produce **enough clean, renewable electricity to power approximately 5,200 homes per year**. It would also offset approximately 4,500 tonnes of CO₂ per year.

PRENTICE'S FARM
SOLAR FARM



ANGLO
RENEWABLES



INTRODUCING ANGLO RENEWABLES

About Us

Anglo Renewables is working at the forefront of the UK's transition to a greener, low carbon economy through identifying and developing solar sites across the country. We are supporting the country's legislated target of reaching Net Zero by 2050 and the global movement to tackle climate change.

Large-scale solar PV (photovoltaic) technology can play a significant role in the UK's response to both the climate and biodiversity emergencies by supporting healthy ecosystems, whilst avoiding the emissions from fossil fuel burning power stations.

Climate Emergency

In recognition of the Government's commitment to tackling Climate Change, Maldon District Council declared a Climate Emergency in February 2021 as part of its "Our Home, Our Future" Climate Action Strategy.

Getting to Net Zero

In 2019 the UK Government became the first country in the world to declare a Climate Emergency. It has subsequently set a legally binding target of Net Zero emissions by 2050. The IPCC (Intergovernmental Panel on Climate Change) Sixth Assessment Report in 2022 has reiterated the urgent need for countries to change the way that we get our energy.

PRENTICE'S FARM
SOLAR FARM



ANGLO
RENEWABLES



Community Benefits

We hope to set up a community benefit fund of £25,000 which will be invested in suitable community projects directly benefitting local residents. This project is subject to local business rates and will generate significant income for Maldon District Council. Over its lifecycle, this project will generate millions of pounds which will help fund local services.

LOCAL BENEFITS OF THE SOLAR FARM

- It will assist Maldon District Council in meeting its pledge to become a carbon-neutral authority by 2030, in addition to supporting its response to the Climate and Ecological Emergency the Council declared in February 2021.
- The proposed development will contribute towards the security of energy supply in the UK through the provision of local, renewable energy supply.
- No public rights of way will be closed during or after construction of the solar farm.
- New hedgerow planting is proposed and existing hedgerows will be gapped up, contributing to the overall biodiversity and landscape scheme which will be developed as part of the scheme.
- Helps reduce carbon emissions and combat climate change - a saving of 4,500 tonnes of carbon dioxide per year.
- Ecological enhancements including wildflower and wild bird seed grasslands, and a range of breeding boxes for bats and birds are being considered as part of the application. We anticipate that the solar farm will have a significant positive net biodiversity impact.
- This is a temporary development, allowing the land to rest for the period of operation up to 40 years.
- The proposed solar farm will not require Government subsidy.
- Anglo Renewables is committed to using local suppliers during construction and operation where possible.
- A solar farm gives land the opportunity for multiple uses. In addition to renewable energy production, solar farms can continue to be grazed by sheep and support biodiversity with wildflowers sown around the site.



COMMUNITY BENEFITS

We believe that it's right that the community closest to a solar farm is able to benefit from it. In addition, we believe that the community itself is best placed to say what the community benefit should be. If you have an idea for a sustainable community-based scheme or project, then please share your idea with us on this board.

A large, empty rectangular area intended for community members to share their ideas for sustainable community-based schemes or projects.



FREQUENTLY ASKED QUESTIONS

Why put a solar farm here?

Solar farms have to be located where there is suitable land to accommodate the scheme, as well as where grid connection is available. A detailed assessment of the site has been conducted with the land in question meeting the required criteria. Extra consideration was given to the area due to Essex's increasing renewable credentials.

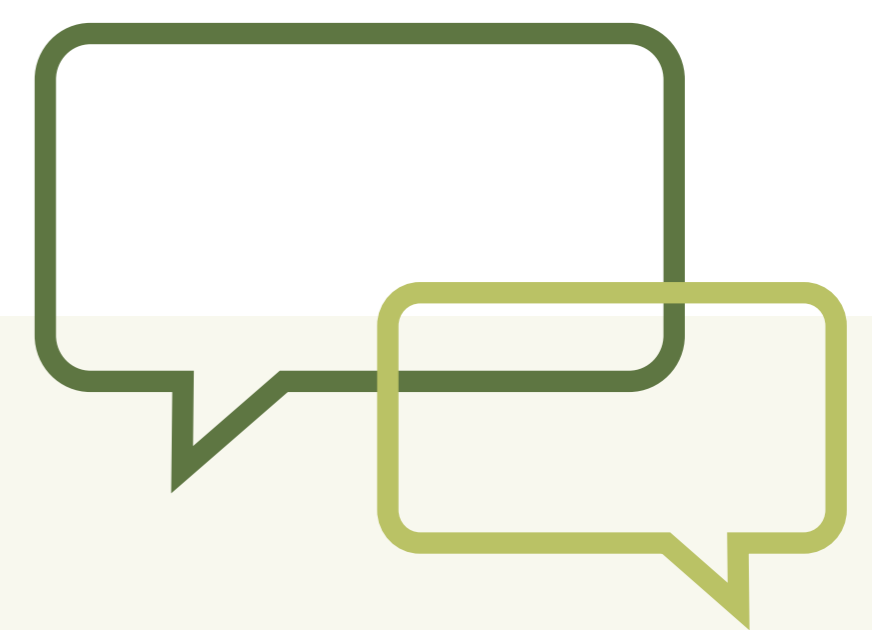
Will the Solar Farm change the land classification?

The Solar Farm is a temporary development and will not change the land classification from agricultural greenfield to commercial/ industrial brownfield. In effect, it will continue to be available for grazing after construction of the solar project is completed.

The Solar Farm will allow the land to be utilised productively, while also bringing an array of biodiversity benefits with it.

Are solar farms noisy?

No. Solar panels themselves emit no noise. While minimal resonance is emitted from the inverter and transformer, this is however even quieter than a normal conversation between two people.

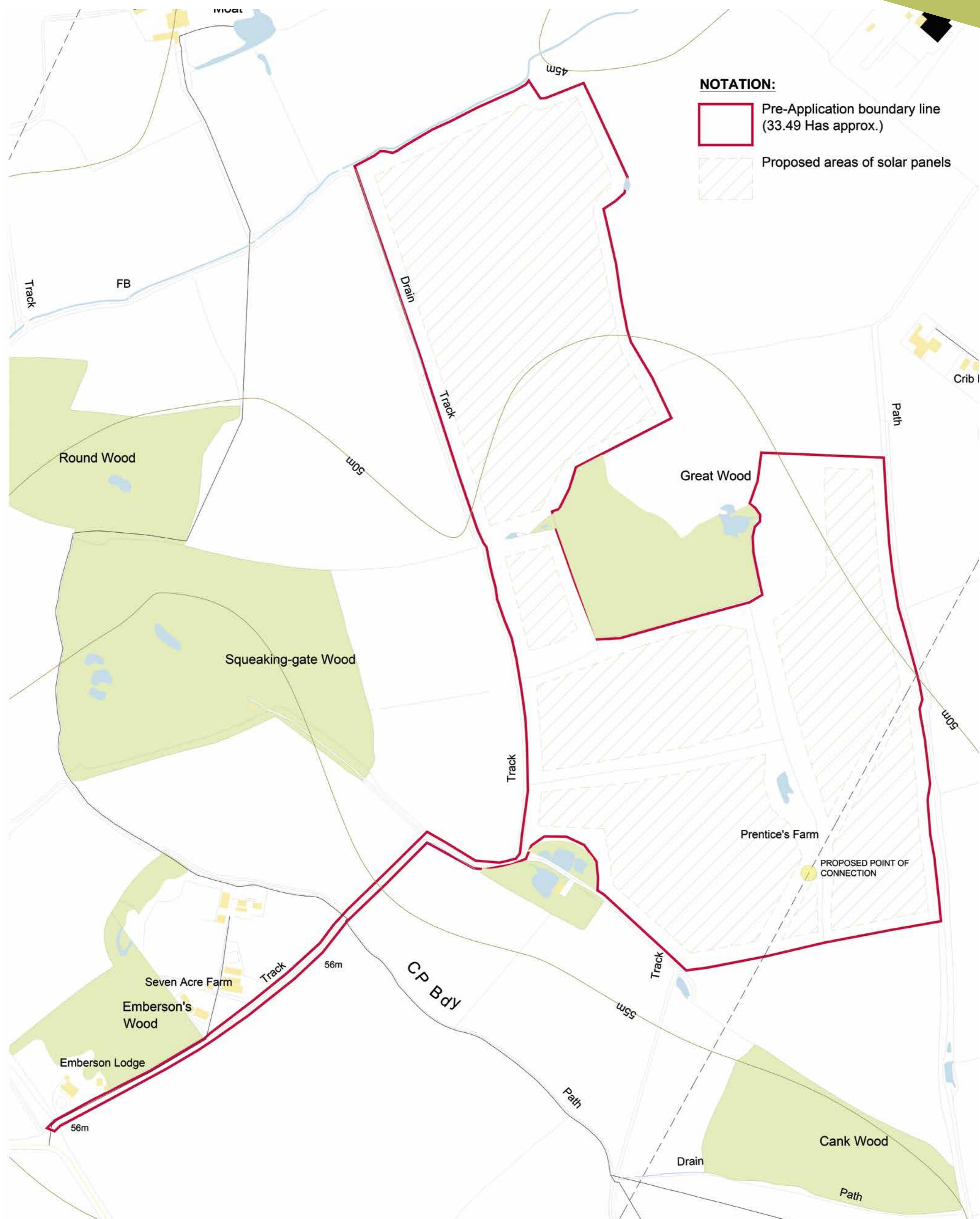


Register your Views

We welcome feedback from members of the community on our draft proposals at this event or via our dedicated website where you can get further information and keep in contact with us.

Please do have a look at our website www.prenticesfarmsolar.com to remain updated about our proposals.





THE SITE

The project is situated on land east of Crows Lane, Woodham Ferrers, Chelmsford, Essex, CM3 8RT. The site extends to approximately 33 hectares and will be located in several fields which are currently used for agriculture.

In addition to having solar panels on the site, the proposal also includes biodiversity and landscape enhancement measures, such as new hedgerow planting and gapping up of existing hedgerows.

This helps to contribute to the overall biodiversity and landscape scheme which will be developed as part of the proposal. Sheep may also be grazed underneath the solar panels once operational, thereby offering dual use for the land.





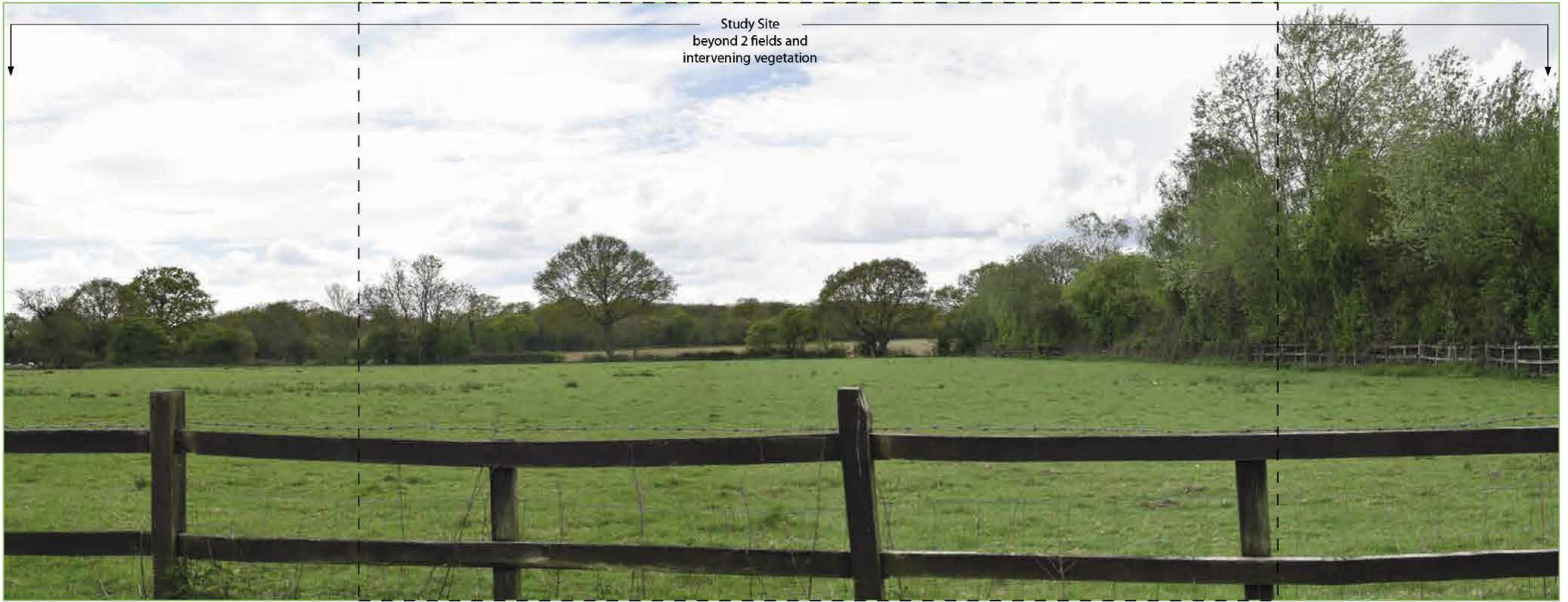
CONSTRUCTION AND ACCESS

It is anticipated that the average number of deliveries to be made by HGVs, vans and smaller lorries during construction period will be approximately 2 deliveries per day. Proposed access follows the route used by farm traffic and HGVs for farm deliveries. The construction period is 4-6 months, during which time lorry

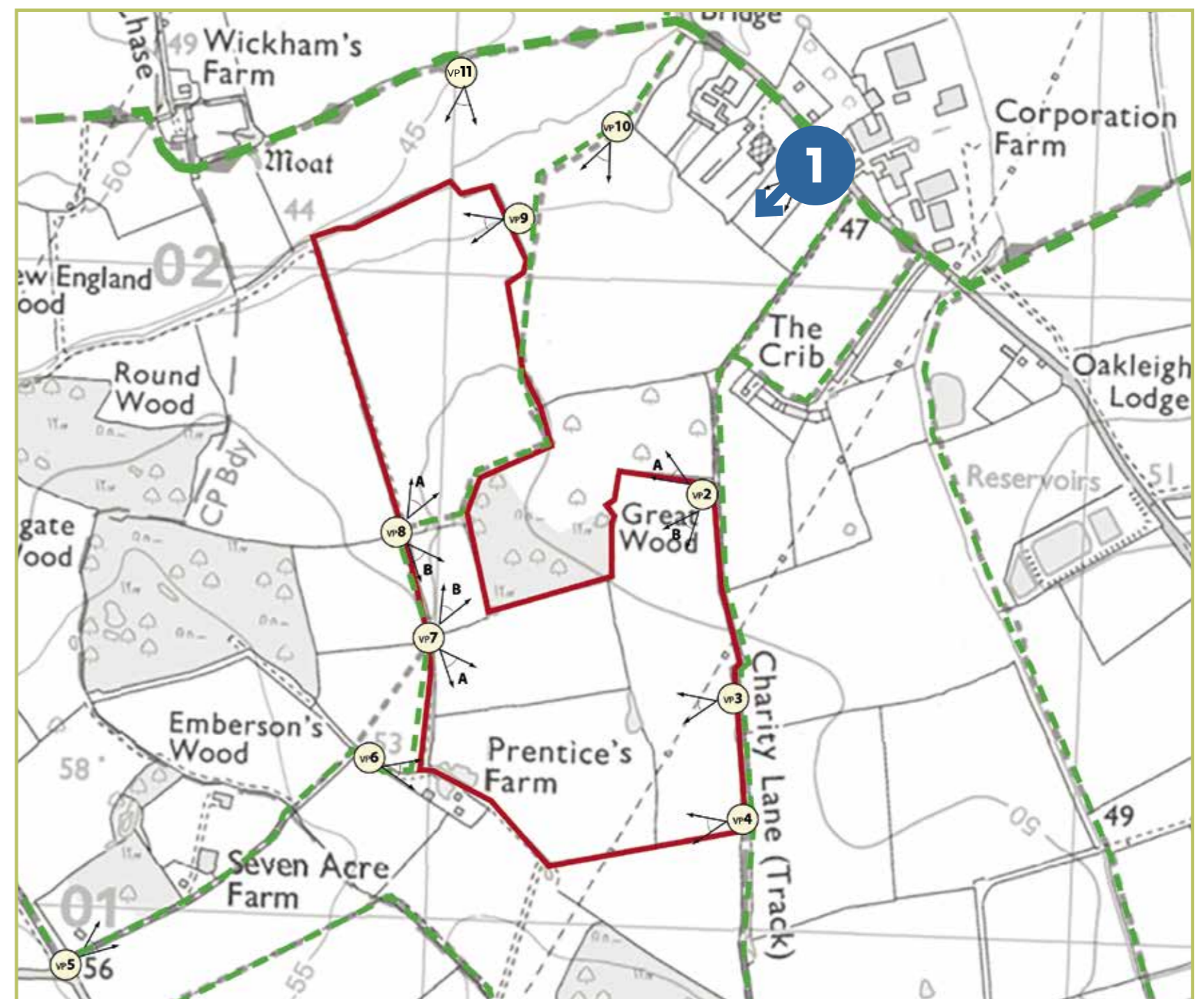
movements will be restricted to avoid peak periods and school times. These restrictions will form part of the Construction Traffic Management Plan which is being drawn up as part of the planning application. Once operational the site will be remotely monitored requiring only occasional maintenance visits.



VIEWPOINTS



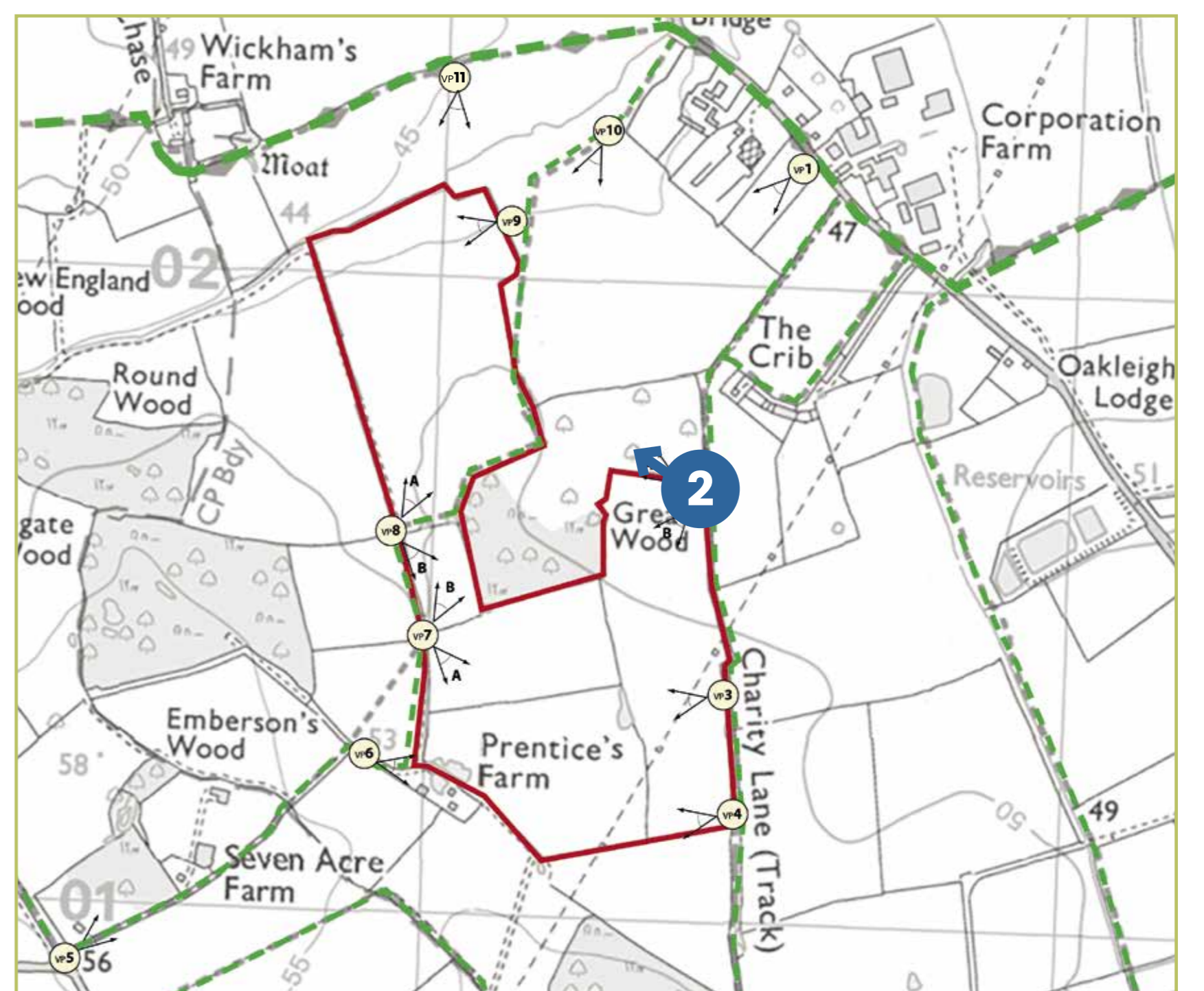
VIEWPOINT 1



VIEWPOINTS



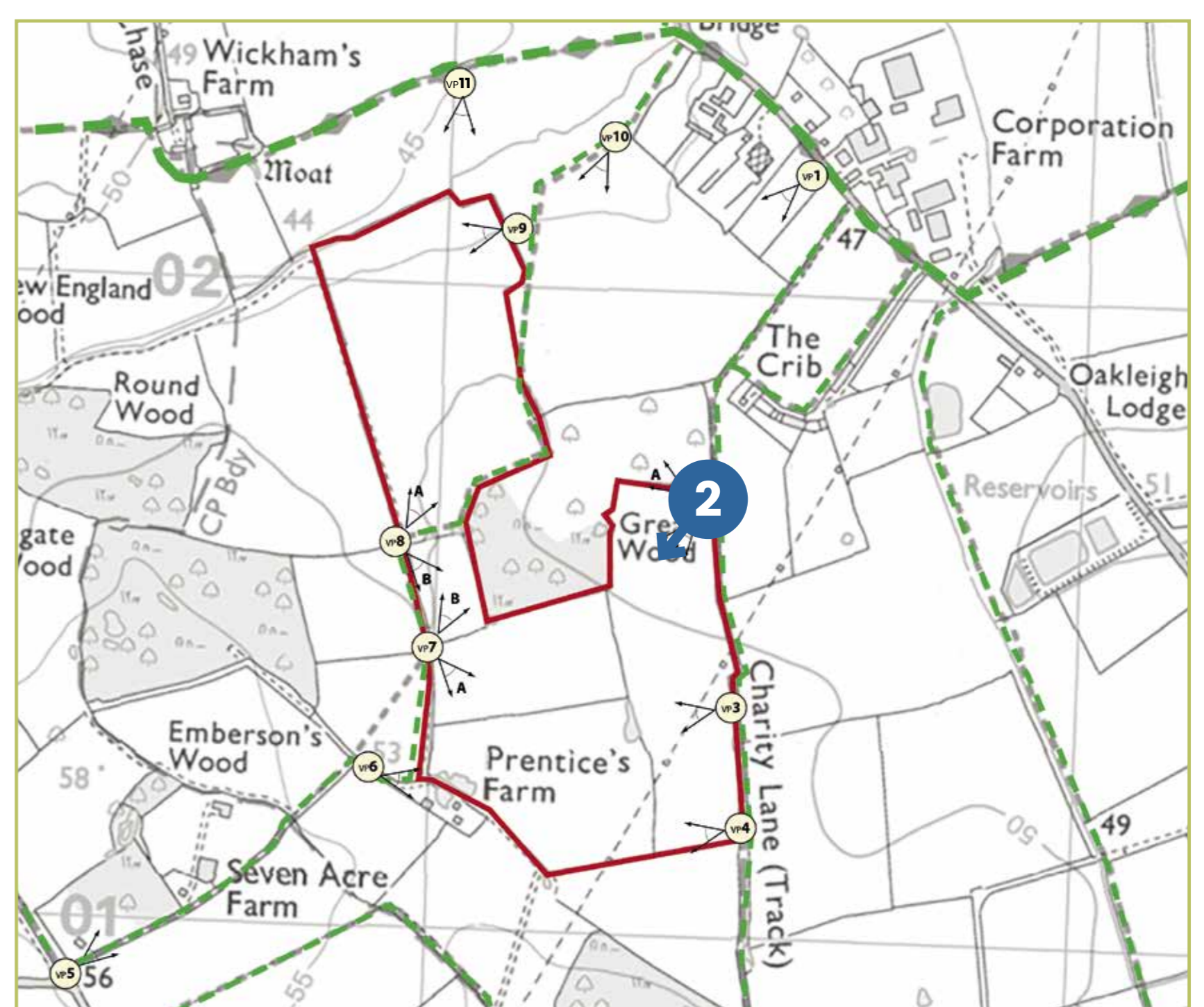
VIEWPOINT 2A



VIEWPOINTS



VIEWPOINT 2B



VIEWPOINTS



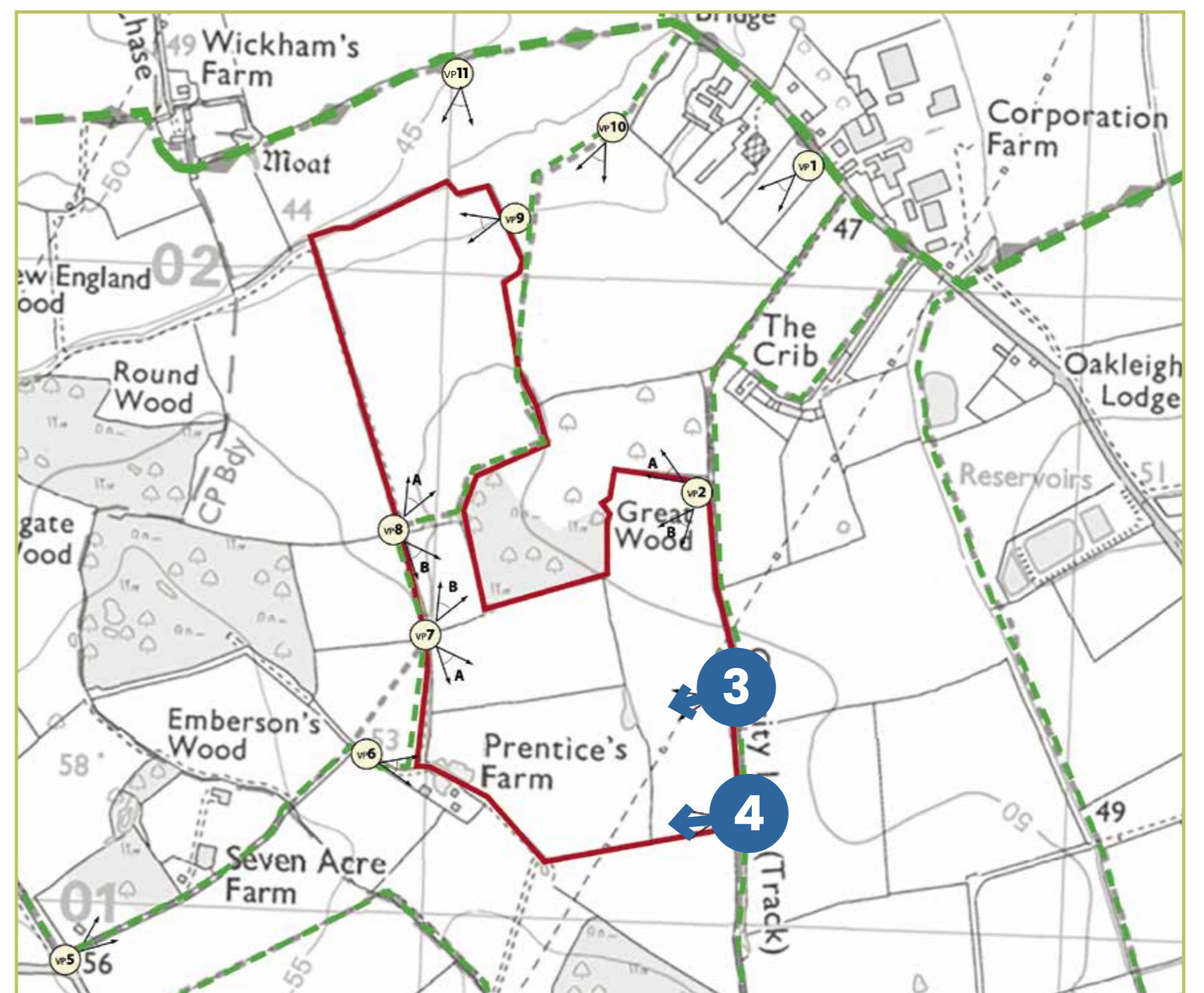
Extent of Single Frame View

VIEWPOINT 3



Extent of Single Frame View

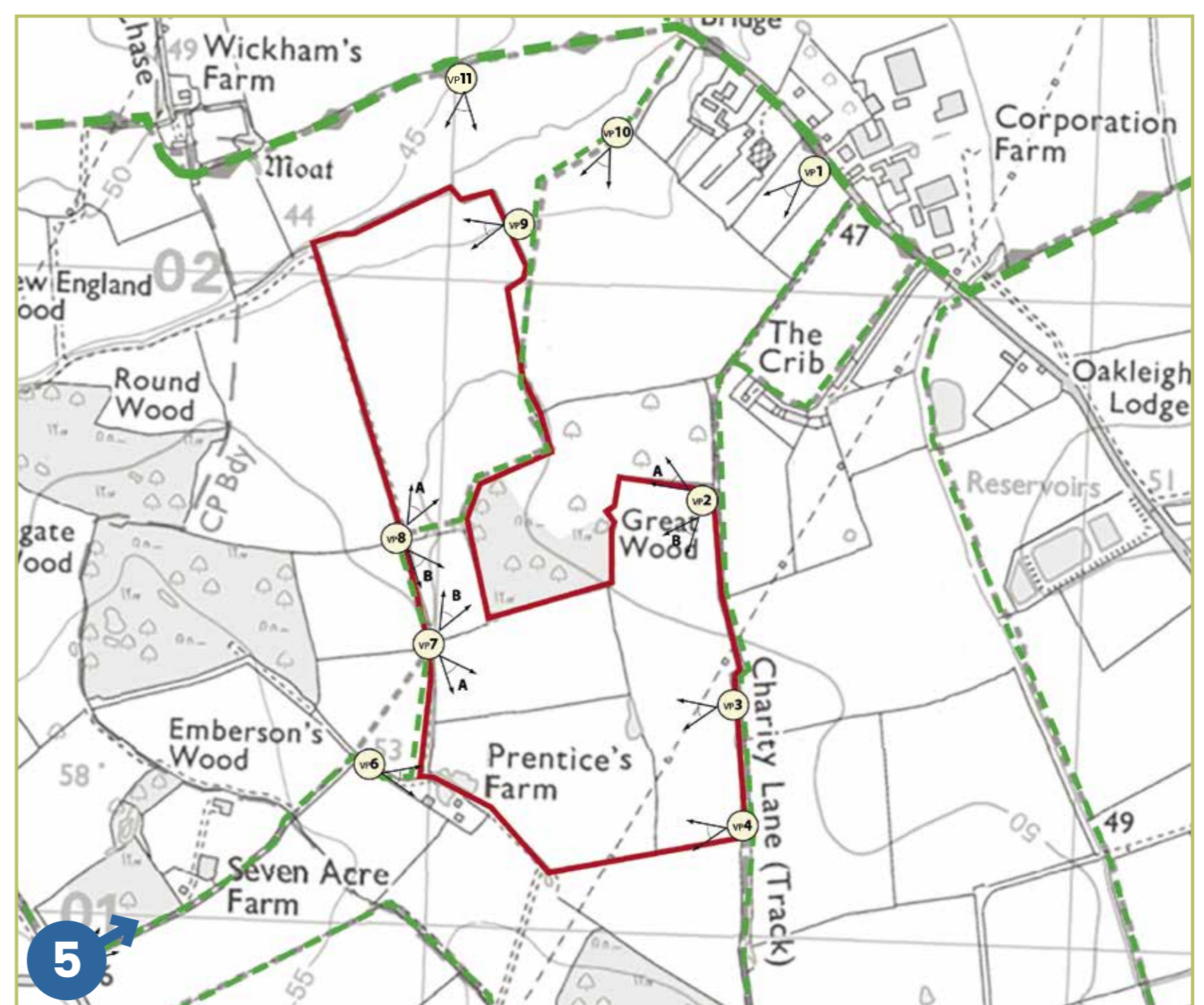
VIEWPOINT 4



VIEWPOINTS



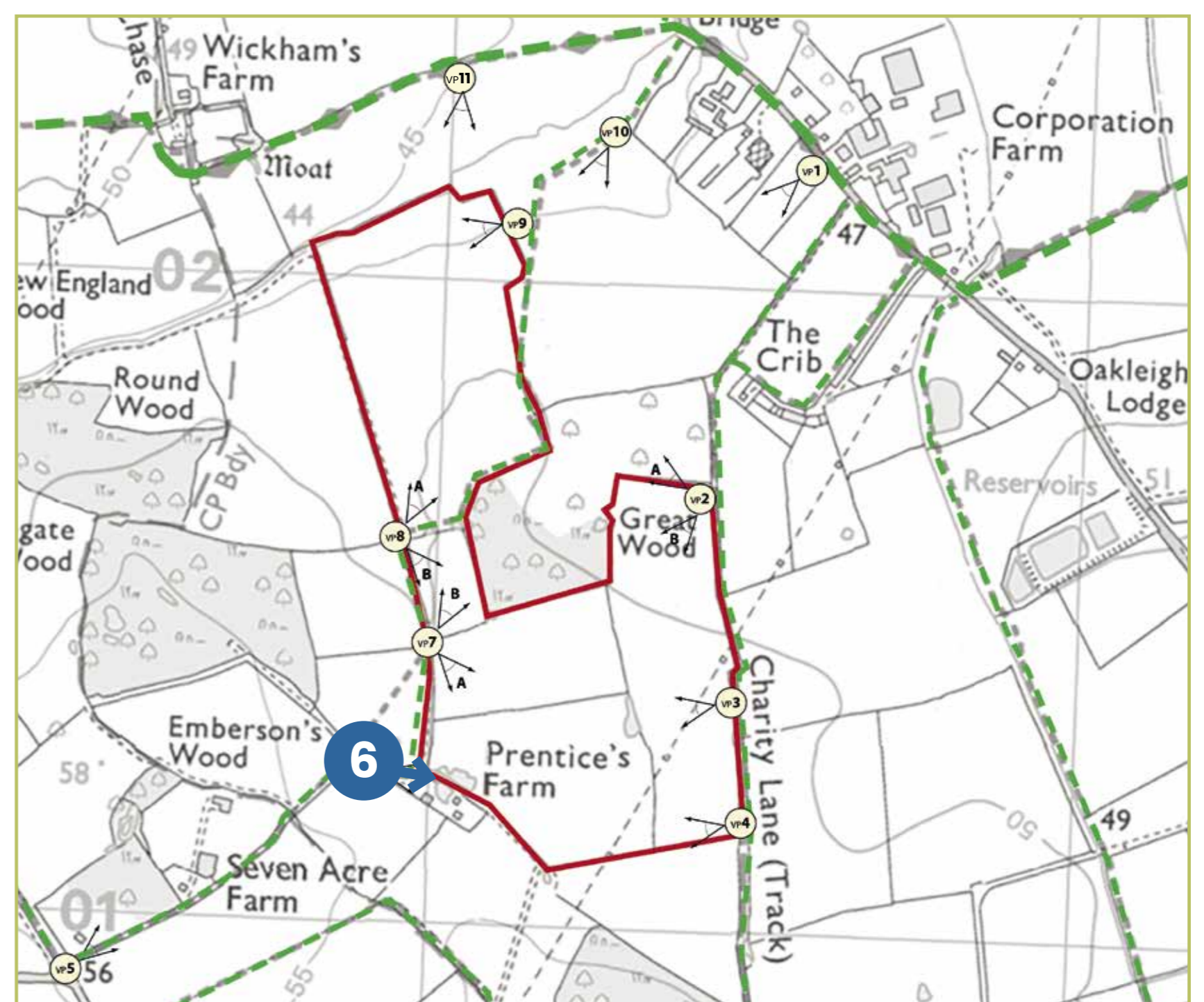
VIEWPOINT 5



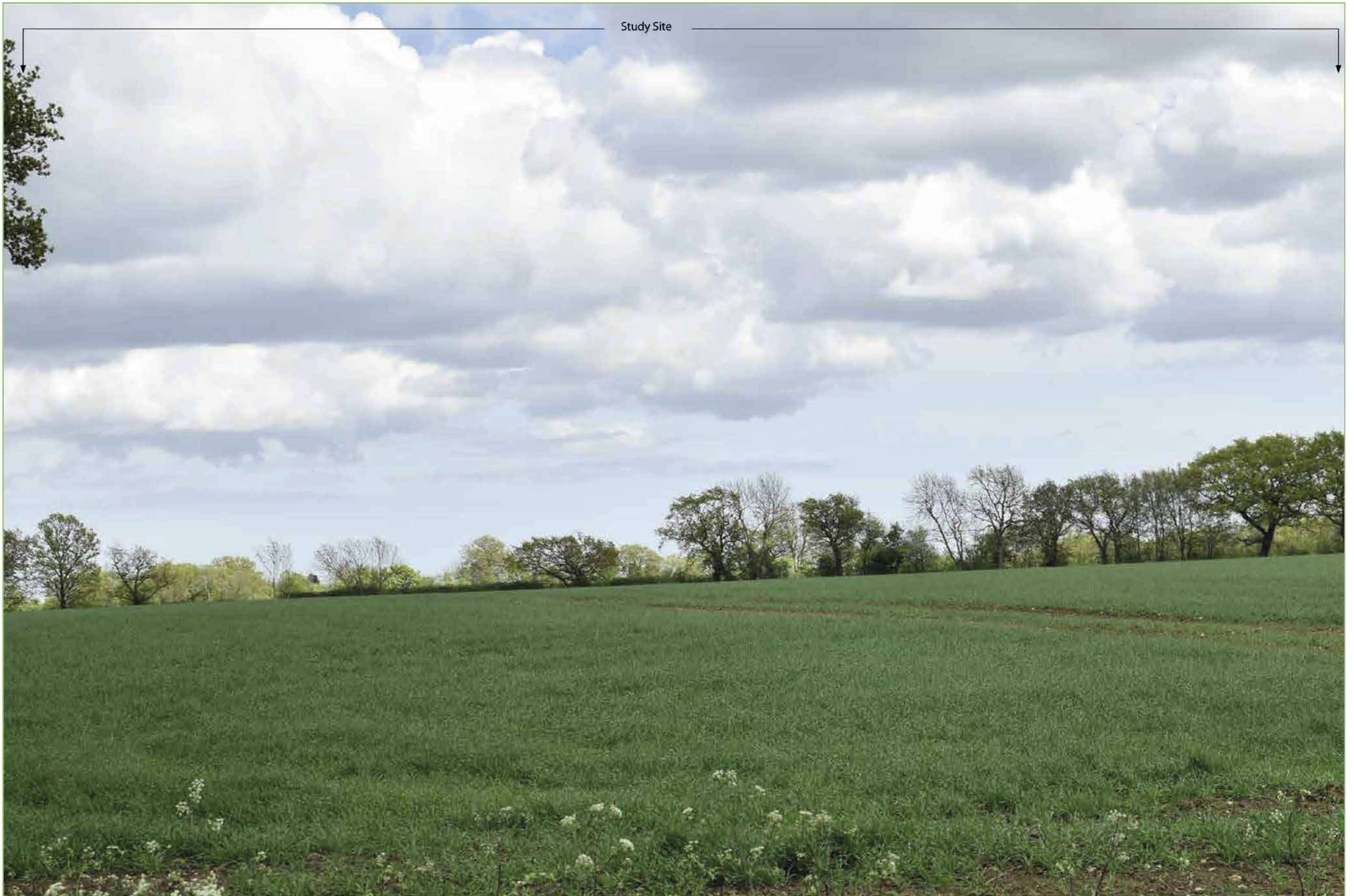
VIEWPOINTS



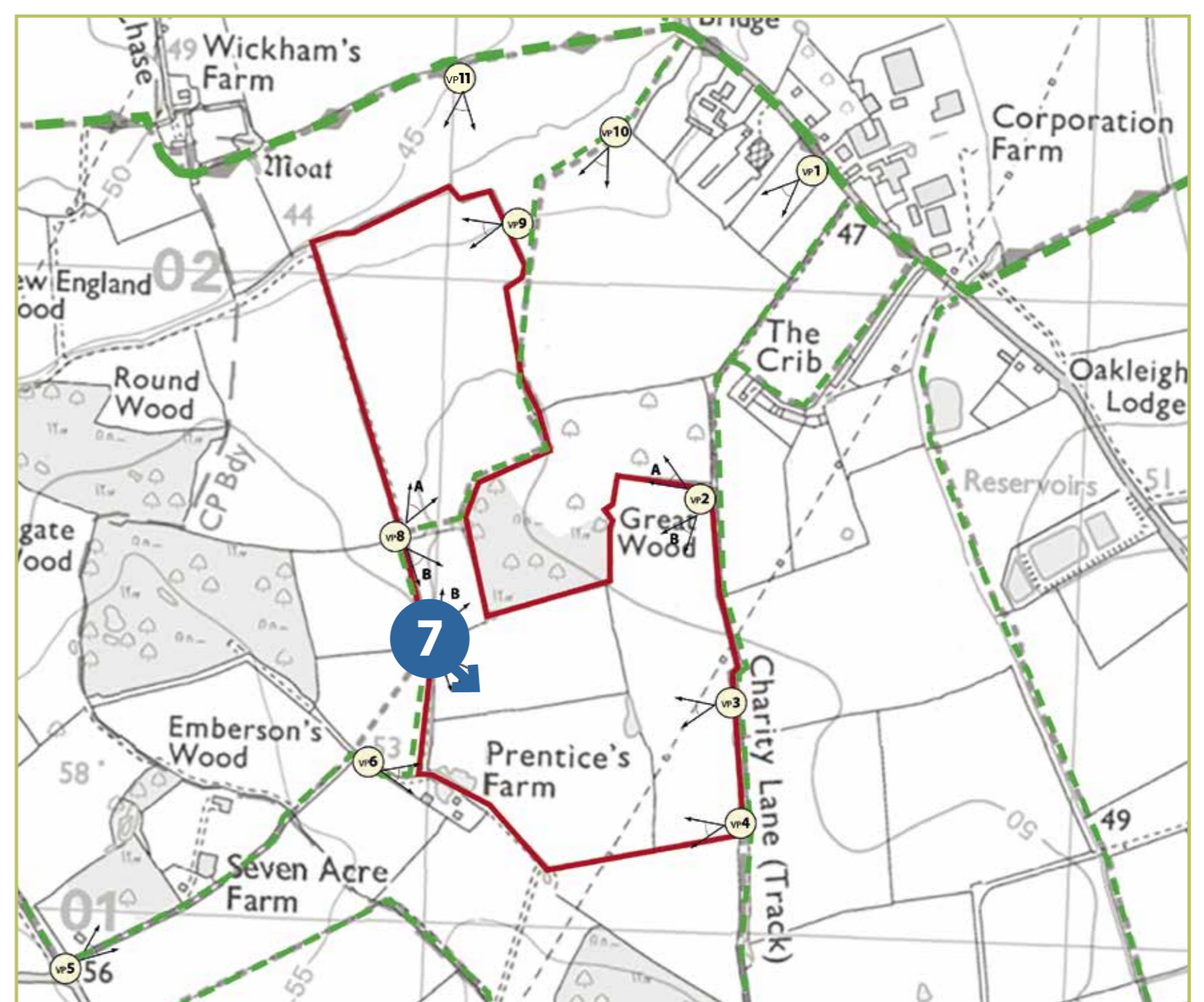
VIEWPOINT 6



VIEWPOINTS



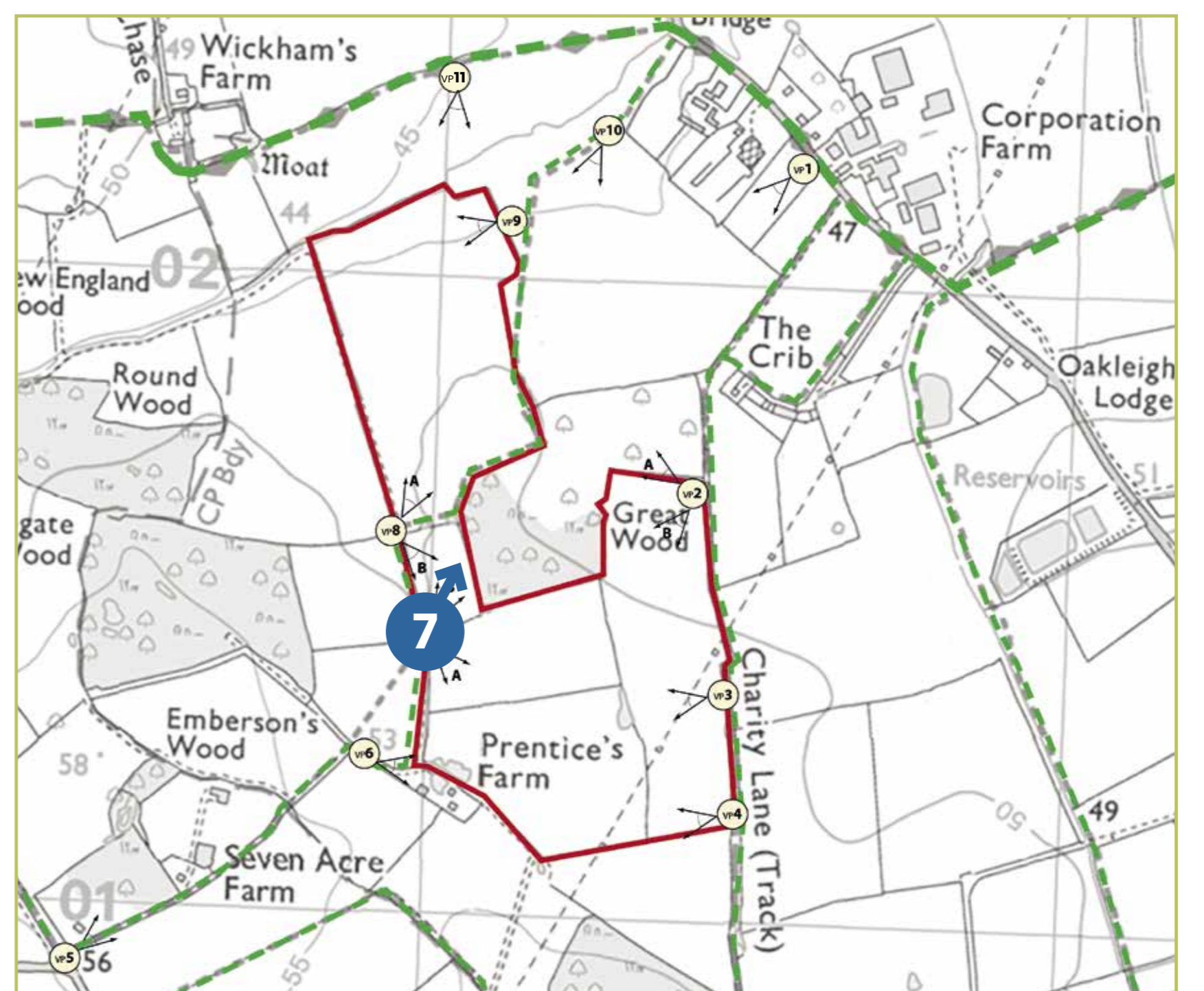
VIEWPOINT 7A



VIEWPOINTS



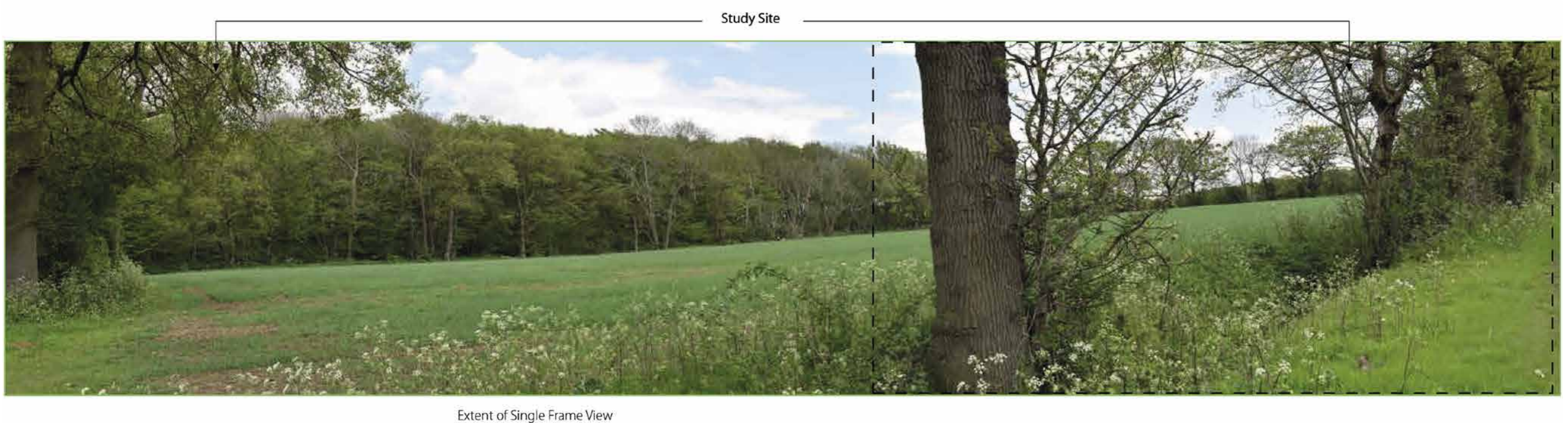
VIEWPOINT 7B



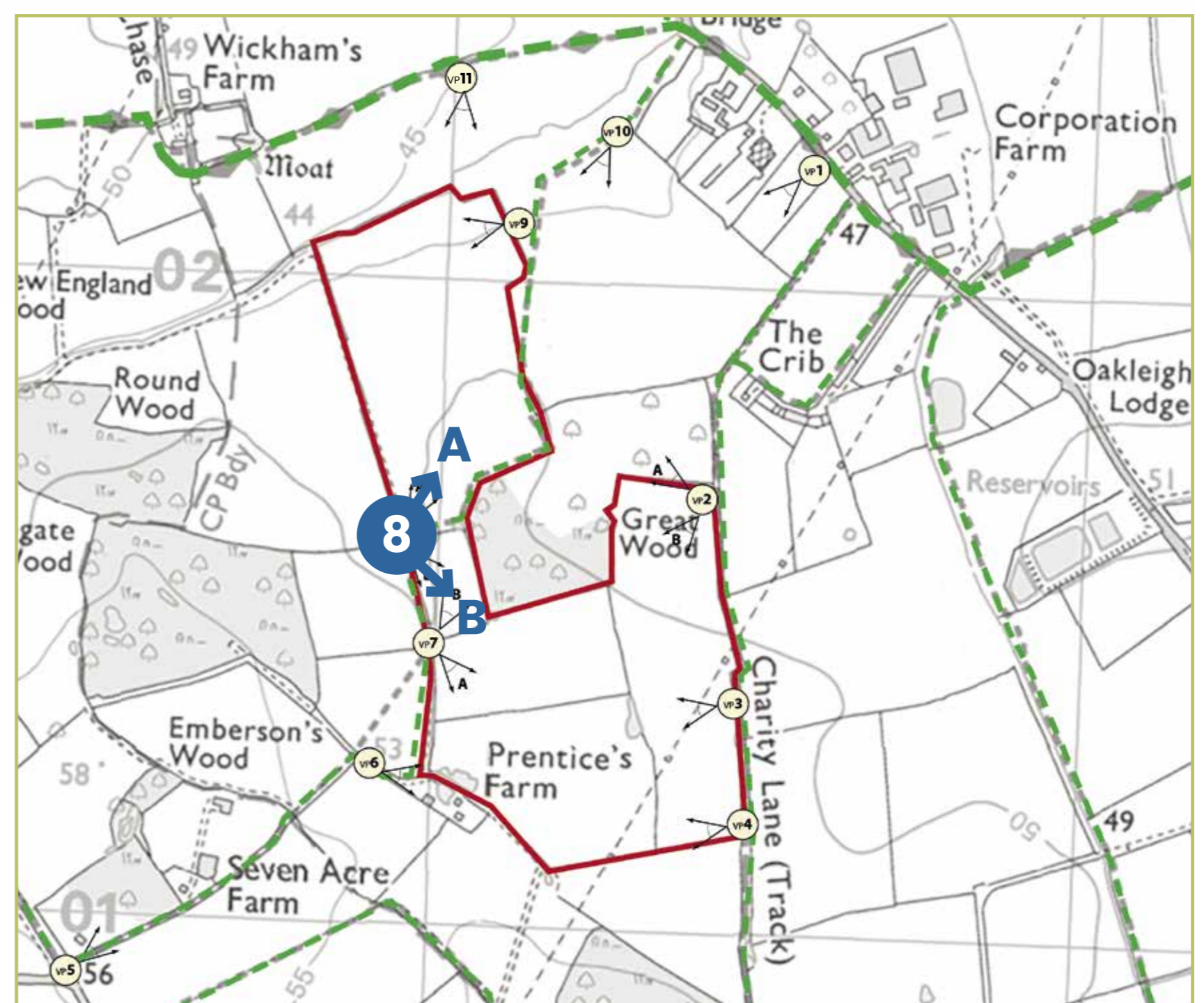
VIEWPOINTS



VIEWPOINT 8A



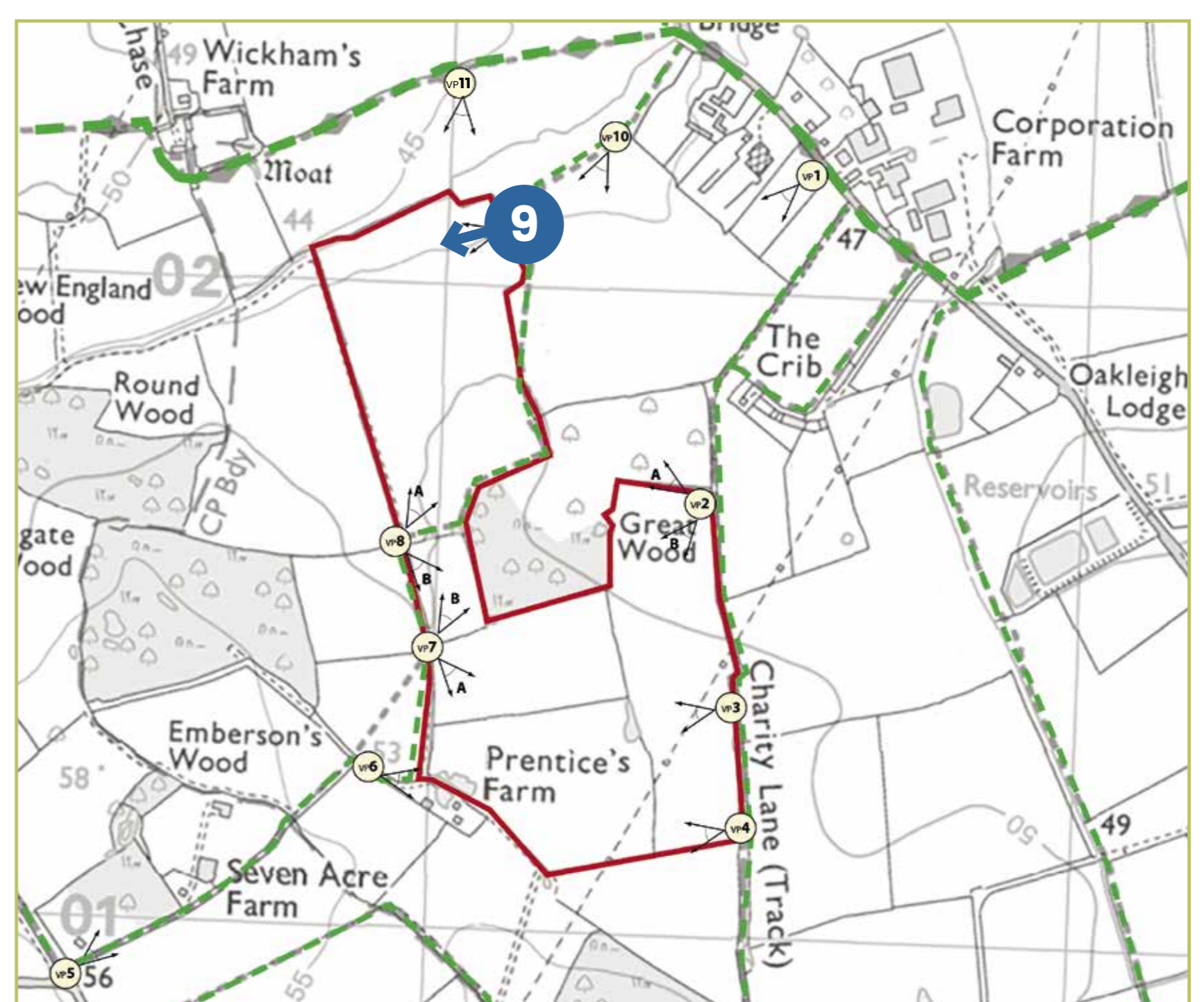
VIEWPOINT 8B



VIEWPOINTS



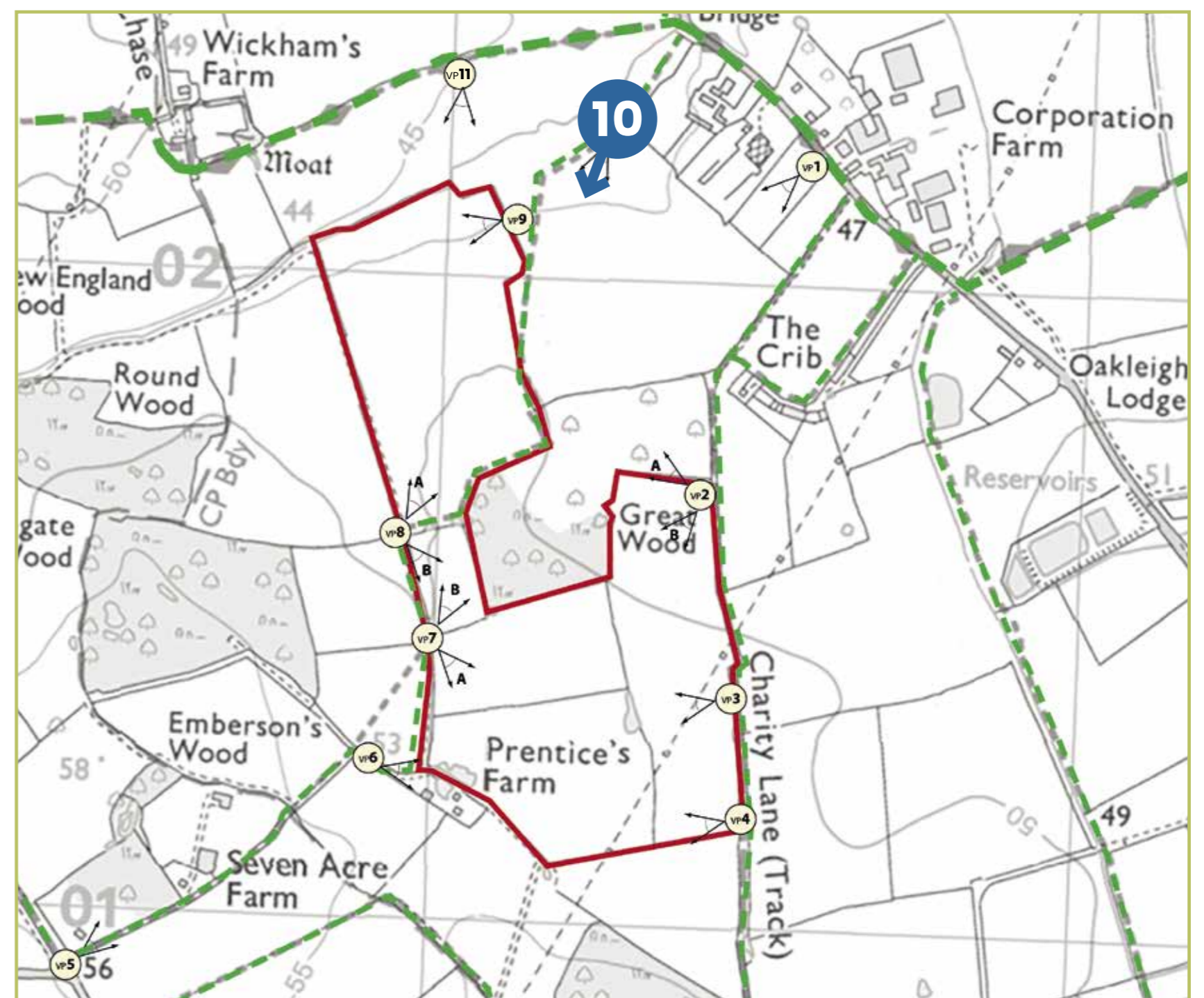
VIEWPOINT 9



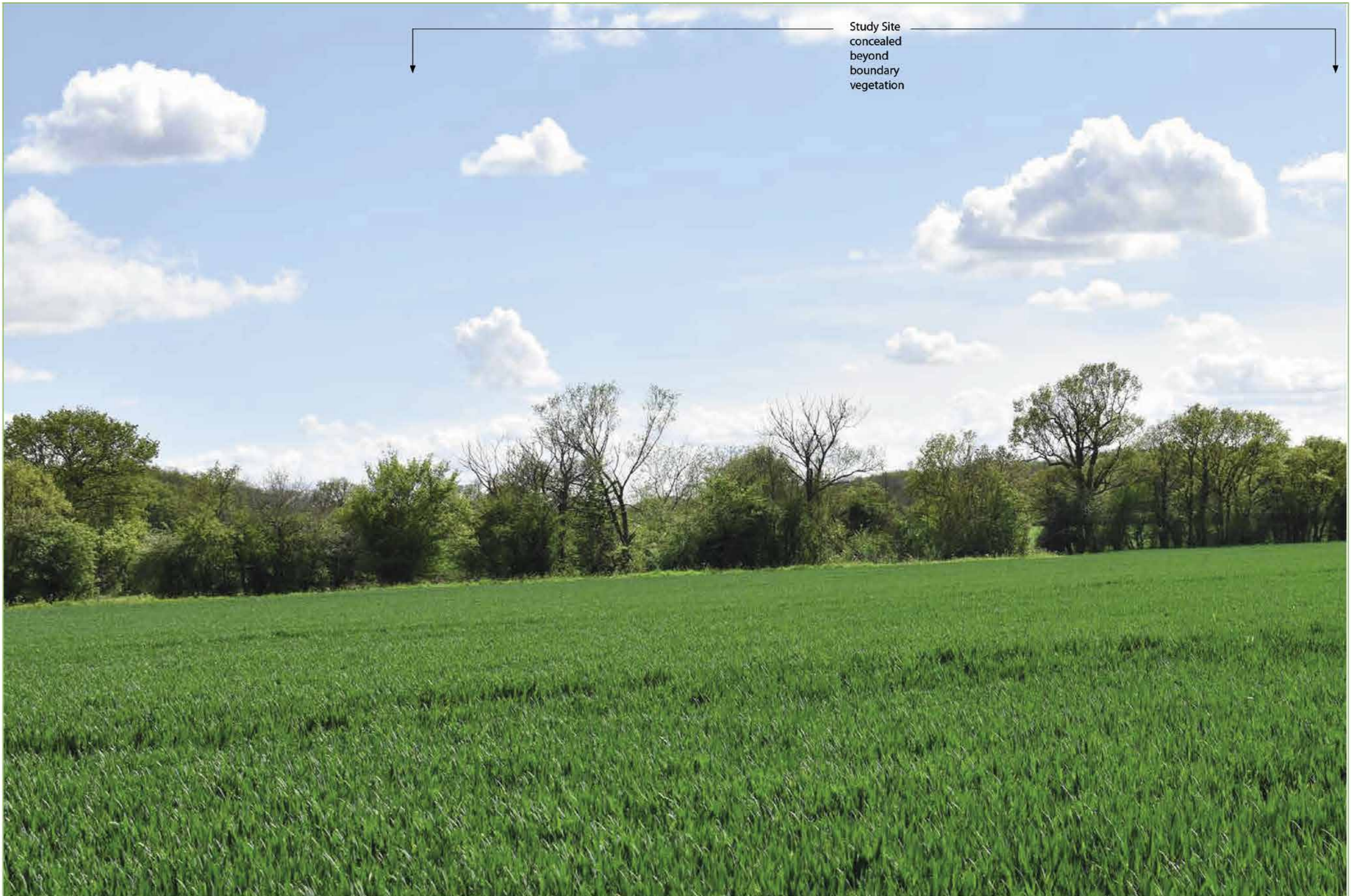
VIEWPOINTS



VIEWPOINT 10



VIEWPOINTS



VIEWPOINT 11

